



Press Release - 24/06/2025

SEA.AI and Nautitech Strengthen Commitment to Innovation, Safety, and Sailing Excellence

Sea.AI and renowned French shipyard Nautitech Catamarans are strengthening their collaboration by offering SEA.AI's machine vision systems as an option to Nautitech clients across their range of high-performance catamarans.

This partnership reflects a shared commitment to delivering innovation, safety, and an exceptional sailing experience.

For Nautitech, crafting catamarans is about more than shipbuilding—it's about creating the perfect balance between freedom, performance, and comfort.

Each design choice is guided by the belief that navigation and performance must remain at the core of a multihull's DNA.

While the market often emphasizes the experience at anchor, Nautitech stands out by ensuring its catamarans excel both when stationary and when venturing into open waters.



Photo credit: @Polaryse

*"Innovation and safety are essential to delivering the sailing sensations our owners expect," explains **Cédric Beaumont**, Premium Service Manager of NAUTITECH CATAMARANS. "Our vision focuses on robust construction, excellent performance, and high-end comfort—all while prioritizing ease of use and safety in all wind conditions. Integrating Sea.AI's smart lookout aligns perfectly with this philosophy, ensuring that our catamarans not only perform exceptionally well but also offer peace of mind for sailors, whether cruising or pushing boundaries offshore."*



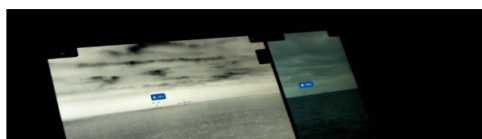
Photo credit: @Nautitech

SEA.AI's technology acts as an additional, tireless crew member dedicated to safety, providing round-the-clock situational awareness. Its machine vision system continuously detects and alerts the presence of floating objects and potential hazards in real time—day or night, in any conditions.

From unlit buoys, floating containers, and fishing gear to small craft without AIS signals, SEA.AI spots what traditional systems like radar or AIS may overlook and what the human eye can miss in low visibility or at night.

It allows captains and crew to stay focused on navigation and performance, knowing they have reliable support enhancing safety at every moment.

Beyond collision avoidance, the system is particularly valuable when arriving in unfamiliar areas after dark, helping sailors safely maneuver around moored boats or locate space to dock in busy harbors.



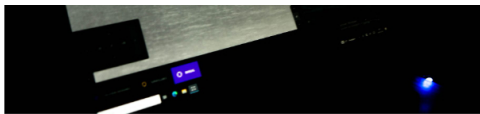


Photo credit: @Polaryse

Bruno Guerin, Sales Manager France at SEA.AI, commented:

"Nautitech catamarans are built for sailors who demand more—from their boat and their time on the water. Our collaboration is driven by a shared desire to enable that bold, dynamic approach while embedding the highest standards of safety and innovation. SEA.AI systems integrate seamlessly into the Nautitech fleet and their onboard electronics, acting as an extra set of eyes and a trusted co-skipper. Together, we offer sailors the tools they need to sail further, faster, and with confidence."

This partnership underscores both companies' commitment to shaping the future of bluewater sailing by delivering forward-thinking solutions without ever compromising on performance or comfort.

As SEA.AI and Nautitech continue to innovate, sailors worldwide can expect technology and craftsmanship designed to match their ambition—whether at anchor or chasing new horizons.



Photo credit: @Nautitech

SEA.AI Experience NAUTITECH CATAMARANS



About SEA.AI

SEA.AI is a pioneer in Machine Vision for maritime applications since 2018. With a team of over 70 professionals based in Austria, France, Portugal, and the United States, the company is dedicated to making Machine Vision the new standard for safety and situational awareness in the maritime sector. Their product range includes fully integrated systems that combine optical and thermal sensors with artificial intelligence to enhance safety and security at sea, as well as SEA.AI's maritime machine vision solution, Brain, which is compatible with third-party cameras. SEA.AI systems are designed to quickly detect and identify floating objects, providing the crew with real-time information. The technology is available in various versions tailored to the specific needs of recreational, commercial, and governmental vessels, including unmanned surface vehicles (USVs).

www.sea.ai

About Nautitech

It's at Rochefort sur Mer, cradle of naval architecture and construction, that **NAUTITECH CATAMARANS** berthed its shipyard and production of luxury catamarans. Founded over 30 years, Nautitech designs, develops, and builds high-quality catamarans. 100% made in France, these boats are exported worldwide to meet the expectations of discerning owners seeking the perfect blend of sailing pleasure, performance, and high-level comfort. What sets Nautitech apart is its small-series production, where craftsmanship plays a central role. By focusing on the owner's market, the company pays meticulous attention to every detail.

Press Contact: Amandine VERT
Tel: +33 6 58 73 28 84

www.nautitechcatamarans.com/en

Contact:

SOLENN GOUEROU
Head of Marketing & Communications
+33 6 31 29 83 61 | solenn.gouerou@sea.ai

SEA.AI SAS | Port La Forêt | 29940 La Forêt Fouesnant | France

